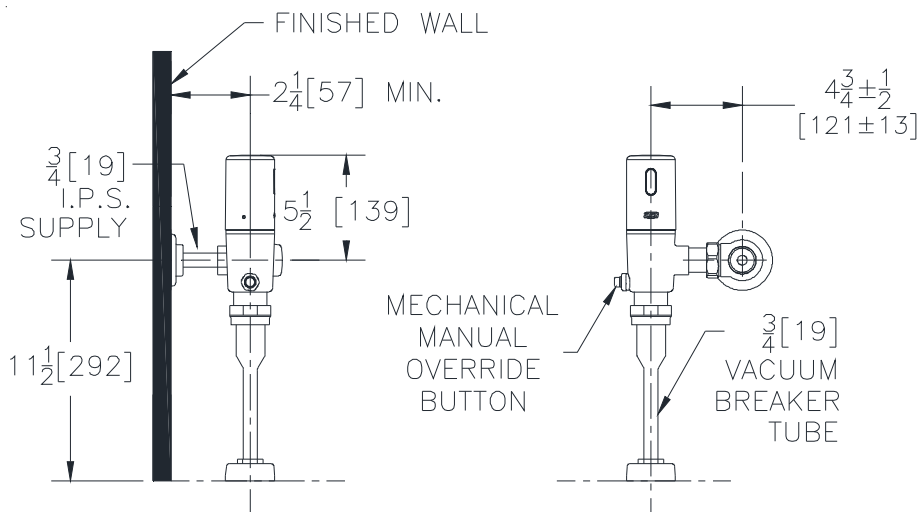




## ZTR6203-ULF

0.125 gpf Sensor Operated Urinal Flush Valve



### Accessories

- ☐ -LL 10 Year Long Life Battery
- ☐ -YJ Split Ring Pipe Support
- ☐ -YK Solid Ring Pipe Support
- ☐ -YO Bumper on Angle Stop
- ☐ -\_\_\_\_\_ Other

**NOTE: Performance guaranteed with Zurn EcoVantage® fixtures. Please consult Zurn Technical Services at 1-800-997-3876 to discuss the paired performance of this valve with other manufacturers fixtures.**



\* This product should be used with a WaterSense labeled counterpart with a compatible flush volume to ensure that the entire system meets the requirements for water efficiency and performance.

Architectural/Engineering Approval

The information contained in this document is subject to change without notice.

ZURN INDUSTRIES, LLC. ♦ COMMERCIAL BRASS OPERATION  
5900 ELWIN BUCHANAN DRIVE ♦ SANFORD NC 27330  
PHONE: 1-800-997-3876 ♦ FAX: 919-775-3541  
WWW.ZURN.COM

IN CANADA: ZURN INDUSTRIES LIMITED  
7900 GOREWAY DRIVE UNIT 10 ♦ BRAMPTON, ONTARIO L6T5W6  
PHONE: 905-405-8272 FAX: 905-405-1292

AquaSense® is a registered trademark of Zurn Industries, LLC.

### ENGINEERING SPECIFICATIONS

Exposed chrome plated flushometer valve with a polished robust metal cap exterior.

- Filtered Piston Kit  
Chloramine resistant
- Proprietary DR resistant low lead brass alloy
- Actuator  
Sensor powered by 4 "AA" batteries  
3 year battery life on 48,000 activations per year
- Mechanical Manual Override Button
- Control Stop  
Internal siphon-guard protection  
Vandal resistant stop cap  
Sweat solder kit  
Cast wall flange with set screw
- Vacuum Breaker  
High back pressure  
One piece hex coupling nut
- Internal seals  
Chloramine resistant
- Adjustable tailpiece
- Spud coupling and flange for top spud connection